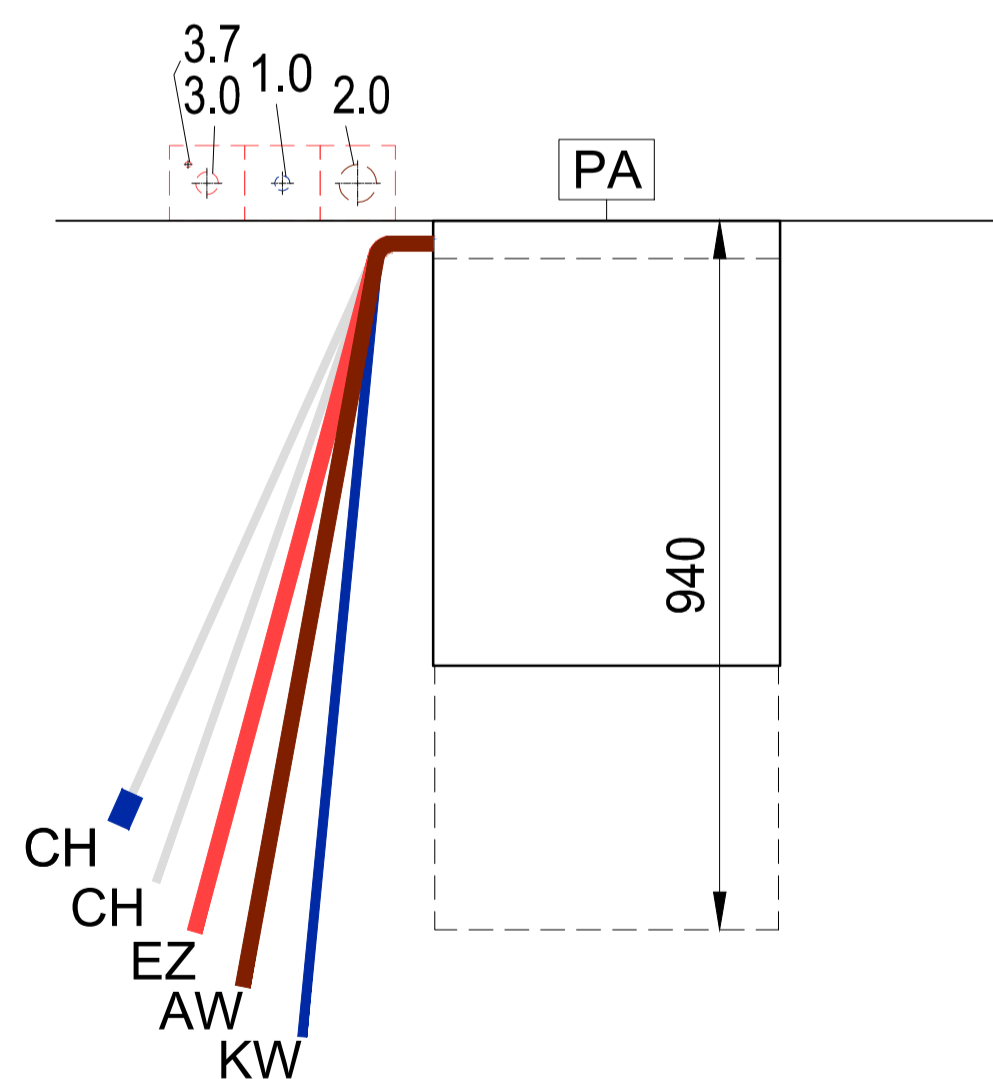
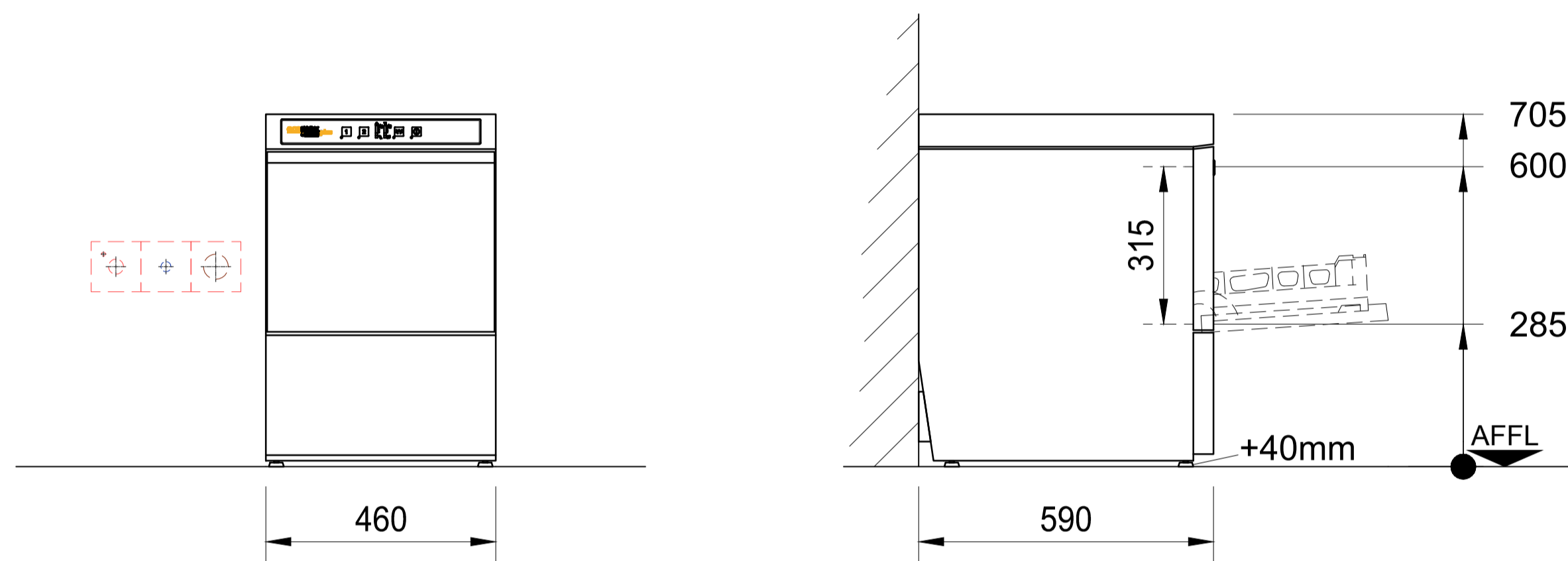


AW = drain water	KW = cold water	AFFL = above finished floor level
Dat = dataline	KWw = cold water soft	SFB = separate filling-boiler
EZ = power line (supply)	LR = conduit Ø	VEW = demineralized water
FD = floor opening	CNS = stainless steel (inox)	WD = wall opening
HW-VL = hot water flow	MK = supply chanell	WS = wall slot
HW-RL = hot water return	PA = equipotential conductor	WW = warm water
KB = cored hole Ø	STL = control line	WWw = warm water soft



**Connections:** The connection of the dishwasher to all services (e.g. electrical, water, drain, exhaust) must comply with all national and local codes of practice and must be carried out by qualified people.

**Attention:** If the dishwasher has a frequency inverter included and is connected after a RCD (FI PROTECTIVE SWITCH), this must be AC/DC sensitive type B.

**Exhaust:** A frost-protection flap is recommended if the exhaust air from the machine is ducted directly outside. If an exhaust hood is installed on top of the dishwasher, an airgap of min. 150mm needs to be maintained. Operational fluctuations can lead to a temporary higher exhaust temperature and humidity (VDI 2052)

**Dimensions:** Dimensions in the drawing are finished dimensions in Millimeters.

**Transport:** Minimum measurements of entry doors = outer largest dimension of machine height + 300mm; machine width + 400mm!

**Shut-off valves:** The isolating valves for rinse water, tank filling or demi-rinse are to be supplied by others.

**Wash result:** A streak free result is achievable with low mineral concentration of the rinse water only (see caption "water/conductivity"). If necessary a de-mineralization system should be installed.

**Floor drain:** Splash floor drains should be installed for machine cleaning and for general cleaning purpose.

**Ventilation:** The ventilation and exhaust for the room must be according to VDI 2052. Radiated heat emissions must be considered.

<b>Machine-Type:</b>		<b>Glasswasher</b>				<b>Heating: Electrical</b>		
<b>Model:</b>		<b>Eco+G403-11B</b>				<b>Operation: front door</b>		
<b>Rack size:</b>		<b>400 x 400</b>		<b>Loading height: 315</b>		<b>Main-Switch: by others</b>		
required supply (by others) (all installations according to local regulations) (technical feasibility must be checked on site)								
<b>Electrical</b>	<b>PA</b>	<b>Voltage</b>	<b>Frequency</b>	<b>Structure</b>	<b>Fuse</b>	<b>Total Load</b>	<b>Location</b>	
3.7	Equipotential						400mm AFFL	
3.0	EZ	400 V	50 Hz	3-N-PE	3 x 16 A	4,2 kW	400mm AFFL	
<b>Water</b>	<b>Consumption</b>	<b>Temp.</b>	<b>Hardness</b>	<b>Conductance</b>	<b>Dimension</b>	<b>Connection</b>	<b>Location</b>	
2.0	AW	Drain (Siphon provided by customer) / (max. drain height 750mm)			DN50	Drain pipe	400mm AFFL	
1.0	KWw	2,5 l / Rack 8 l (Filling)	min. 10 °C max. 60°C	max. 43,8°e (6,2mmol/l) / 80µS/cm required water flow min. 5l/min	DN20	G ¾ male	400mm AFFL	
Water-Flow-Pressure provided by customer min. 0,8 bar / 11,6 psi - max. 10 bar / 145 psi (Installation in accordance to DIN 1988!)								
machine-side connenctions and data								
CH Supply hose for detergent				2500 mm		CH Supply hose for rinse aid, (blue marking) 2500 mm		
EZ Power cord		2000 mm		AW Drain hose ID20 / OD25 2000 mm		KWw Supply hose R¾ 2000 mm		
Heat-Radiation of the machine (thermal output to the room)								
washware:		1,1 kW		latent:		0,3 kW		
				sensible:		0,6 kW		
<b>Index</b>	<b>Änderungen / Changes</b>						<b>Datum / Date</b>	<b>Name</b>
Das Urheberrecht an dieser Zeichnung verbleibt bei der HOBART GmbH. Jede nicht von uns schriftlich genehmigte Benutzung, Vervielfältigung, Überlassung an Dritte ist strafbar und macht schadensersatzpflichtig. This document contains proprietary and confidential data of HOBART GmbH. No disclosure, reproduction or use of any part there of may be made without written permission of HOBART GmbH.								

HOBART GmbH  
Robert-Bosch-Straße 17  
77656 Offenburg, Germany

Tel.: +49(0)781.600-0  
Fax.: +49(0)781.600-2319  
www.hobart.de

Datum / Date: 13.08.2018	Project:		
Gezeichnet / Drawn by: J.Boschert			
Geprüft / Checked by: -			
Projectmanager:	Maßstab / Scale: 1:20 @ A3	Order-No.:	Zeichnungsnummer / Drawing-No.: