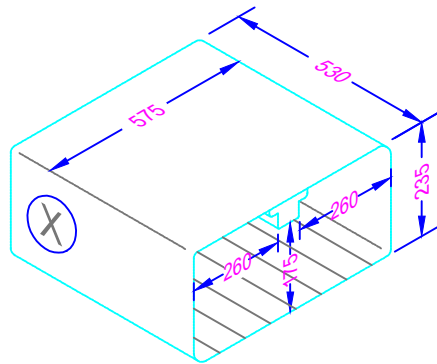
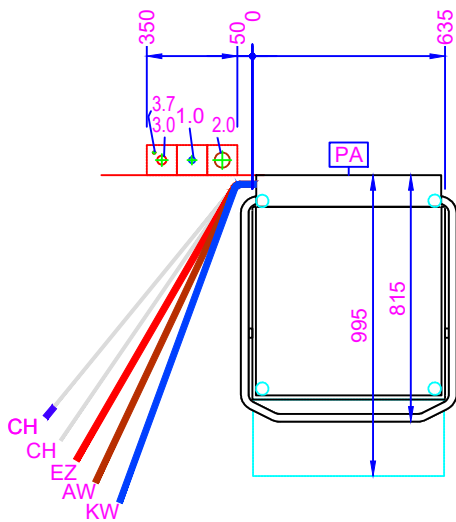
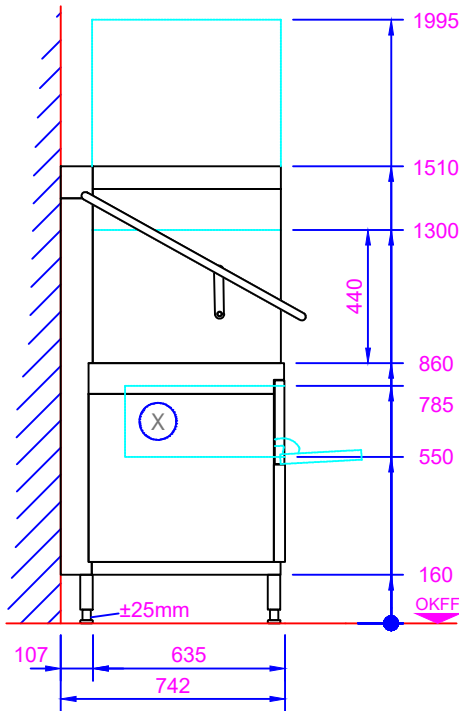
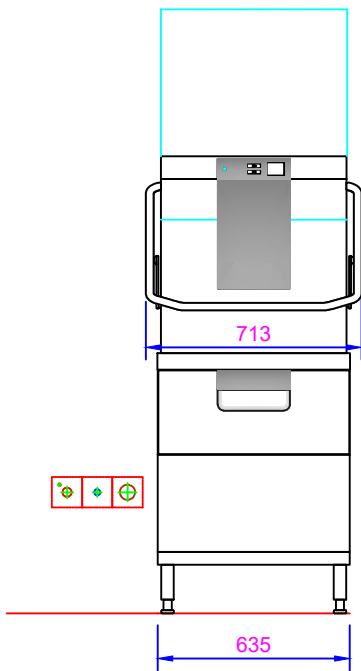




GENERAL LEGEND

AW	=	drain water	KW	=	cold water	ÜOKFF	=	above finished floor
Dat	=	dataline	KWw	=	cold water soft	SFB	=	separate filling-boiler
EZ	=	power line (supply)	LR	=	conduit Ø	VEW	=	demineralized water
FD	=	floor opening	UK	=	stainless steel (inox)	WD	=	wall opening
HW-VL	=	hot water flow	MK	=	supply channel	WS	=	wall slot
HW-RL	=	hot water return	PA	=	equipotential conductor	WW	=	warm water
KB	=	cored hole Ø	STL	=	control line	WWw	=	warm water soft



GENERAL INFORMATION

Connections: The connection of the dishwasher to all services (e.g. electrical, water, drain, exhaust) must comply with all national and local codes of practice and must be carried out by qualified people.

Attention: If the dishwasher has a frequency inverter included and is connected after a RCD (FI PROTECTIVE SWITCH), this must be AC/DC sensitive type B.

Exhaust: A frost-protection flap is recommended if the exhaust air from the machine is ducted directly outside. If an exhaust hood is installed on top of the dishwasher, an airgap of min. 150mm needs to be maintained.

Ventilation: The ventilation and exhaust for the room must be according to AS/NZS1668.2. Radiated heat emissions should be considered.

Dimensions: Dimensions in the drawing are finished dimensions in Millimeters.

Transport: Minimum measurements of entry doors = outer largest dimension of machine height + 300mm; machine width + 400mm!

Shut-off valves: The isolating valves for rinse water, tank filling or demi-rinse are to be supplied by others.

Wash result: A streak free result is achievable with low mineral concentration of the rinse water only (see caption "water/conductivity"). If necessary a de-mineralization system should be installed.

Floor drain: Splash floor drains should be installed for machine cleaning and for general cleaning purpose

Machine-Type:				Dishwasher		Heating: Electrical				
Model:		PROFI TLW-10A				Operation: R/L/R				
Rack size: 500 x 500		Loading height: 440 / 235 (175)				Main-Switch: by others				
required supply (by others) (all installations according to local regulations) (technical feasibility must be checked on site)										
Electrical	Voltage		Frequency	Structure	Fuse	Total Load		Location		
3.7	PA	Equipotential							400mm AFFL	
3.0	EZ	415 V		50 Hz	3-N-PE	3 x 25 A		13.6 kW	400mm AFFL	
Water	Consumption		Temp.	Hardness		Conductance	Dimension	Connection	Location	
2.0	AW	Drain (Siphon provided by customer) / (max. drain height 750mm)					DN50	Drain pipe	400mm AFFL	
1.0	KWw	* 2.0 l / Rack	min. 10 °C max. 60°C	max. 3.75°e (0,5mm ol/l) / 80µS/cm required water flow min. 5l/min			DN20	G ¾ male	400mm AFFL	
		** 2.5 l / Rack								
		30.0 l (Filling)								
* Upper Level		** Lower Level								
Water-Flow-Pressure provided by customer min. 0,5 bar / 7,3 psi - max. 10 bar / 145 psi (Installation in accordance to DIN 1988!)										
machine-side connentions and data										
CH Supply hose for detergent				2000 mm		CH Supply hose for rinse aid, (blue marking)				2000 mm
EZ Power cord		2500 mm		AW Drain hose ID20 / OD25		2000 mm		KWw Supply hose R¾		2000 mm
Heat-Radiation of the machine (thermal output to the room)										
washware: 2.6 kW				latent:		0.3 kW		sensible: 1.1 kW		

DRAFT



HOBART Hood Type Dishwasher
TWO LEVEL WASHER – TLW

A3

SCALE: 1:25 DRAWN:DI DATE: 14/07/20 DRG.No.: A

© COPYRIGHT
WARNING

WARNING

This drawing:
– Remains the property of
Hobart Food Equipment, Australia
– Will not be lent, photocopied, traced,
sold or in any way duplicated, without
the express permission in writing from
an authorised person of the Company.